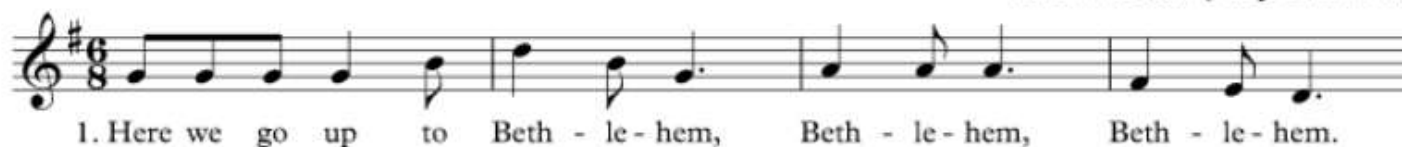




Here We Go Up To Bethlehem



t. June Boyce (*1943)
& Sydney Carter (1915-2004)
m. Traditional (early 19th cent.)



2. Who shall we find in Bethlehem, Bethlehem, Bethlehem?
Who shall we find in Bethlehem on a cold and frosty morning?
3. The shepherds were there in Bethlehem, Bethlehem, Bethlehem.
The shepherds were there in Bethlehem on a cold and frosty morning.
4. The angels came to visit them, visit them, visit them.
The angels came to visit them on cold and frosty morning.
5. The wise men travelled from afar, from afar, from afar.
The wise men travelled from afar on a cold and frosty morning.
6. Here we go up to Bethlehem, Bethlehem, Bethlehem.
Here we go up to Bethlehem on a cold and frosty morning.

